

YOUR TRUSTED PERFORMANCE PARTNER.

DANLOGGROUP.COM
sales@danloggroup.com

725 Drennan St.
Houston, TX 77003
+1 800-231-6355
+1 713-356-3500



Threaded Products | Fasteners & Gaskets | Precision Machining



STYLE BX

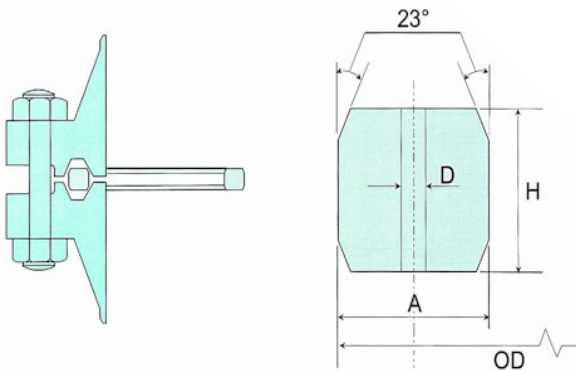
BX ring joint gaskets are manufactured to the specifications of API 6A. They are pressure-energized gaskets designed for use on systems up to 20,000 psi.

BX gaskets are designed to allow virtual face-to-face contact of the flanges to ensure that the gasket is fully trapped on both the inner and outer diameters.

BX gaskets include a pressure balance hole to allow equalization of pressure which may build up in the grooves.

PERFORMANCE THAT COUNTS.

A* width of ring	+/- 0.008,-0.000
D hole size	+/- 0.02
H* height of ring	+/- 0.080,-0.000
OD (outside diameter of ring)	+/- 0.000,-0.006
23° (angle)	+/- 1/4°
Tolerances: (Inches)	



Note: One pressure passage hole required per ring on center line.

*A plus tolerance of 0.008" for width 'A' and height 'H' is permitted, provided the variation in width or height does not exceed 0.004" throughout its entire circumference.

*BX167 is suitable for 26³/₄ nominal pipe size 2,000 psi rating.

**BX169 is suitable for 5³/₄ nominal pipe size 10,000 psi rating.

BX168 is suitable for 26³/₄ nominal pipe size 3,000 psi rating.

BX303 is suitable for 30 nominal pipe size 2,000 and 3,000 psi rating.

WE PERFORM SO YOU CAN PERFORM.

Ring No.	Pressure Class Ratings				Outside Diameter of Ring	Height of Ring	Width of Ring	Hole Size	Weight lbs
	5,000	10,000	15,000	20,000					
	Nominal Pipe Size								
BX150	-	-	-	-	2.842	0.366	0.366	0.06	0.295
BX151	-	1 13/16	1 13/16	1 13/16	3.008	0.379	0.379	0.06	0.337
BX152	-	2 1/16	2 1/16	2 1/16	3.334	0.403	0.403	0.06	0.425
BX153	-	2 9/16	2 9/16	2 9/16	3.974	0.448	0.448	0.06	0.632
BX154	-	3 1/16	3 1/16	3 1/16	4.600	0.488	0.488	0.06	0.875
BX155	-	4 1/16	4 1/16	4 1/16	5.825	0.560	0.560	0.06	1.22
BX156	-	7 1/16	7 1/16	7 1/16	9.367	0.733	0.733	0.12	4.14
BX157	-	9	9	9	11.593	0.826	0.826	0.12	6.55
BX158	-	11	11	11	13.860	0.911	0.911	0.12	9.60
BX159	-	13 5/8	13 5/8	13 5/8	16.800	1.012	1.012	0.12	14.41
BX160	13 5/8	-	-	-	15.850	0.938	0.541	0.12	6.75
BX161	16 3/4	-	-	-	19.347	1.105	0.638	0.12	-
BX162	16 3/4	16 3/4	16 3/4	-	18.720	0.560	0.560	0.06	-
BX163	18 3/4	-	-	-	21.896	1.185	0.684	0.12	-
BX164	-	18 3/4	18 3/4	-	22.463	1.185	0.968	0.12	-
BX165	21 1/4	-	-	-	24.595	1.261	0.728	0.12	-
BX166	-	21 1/4	-	-	25.198	1.261	1.029	0.12	-
BX167*	-	-	-	-	29.896	1.412	0.516	0.06	-
BX168†	-	-	-	-	30.128	1.412	0.632	0.06	-
BX169**	-	-	-	-	6.831	0.624	0.509	0.06	-
BX170	-	-	-	-	8.584	0.560	0.560	0.06	-
BX171	-	-	-	-	10.529	0.560	0.560	0.06	-
BX172	-	-	-	-	13.113	0.560	0.560	0.06	-
BX303††	-	-	-	-	33.573	1.494	0.668	0.06	-